



# Reader User Guide

## ISO-9030 Wand Readers

ISO-9030            9030/50 Keypad  
ISO-9030BT        9030/50 Keypad and Bluetooth (pre-approved)

Including  
Aleis DataLink

Version 1.00 – 14/05/2010

**IMPORTANT! This User Guide must be read in conjunction with  
Reader, prior to use.**

©Copyright Aleis Pty Ltd 2010



A1064AUS

**Aleis Pty Ltd**  
ACN 130 754 826  
**www.aleis.com Ph: 07 46685942**



<b>Regularity Notices and Conformity</b> .....	<b>5</b>
<b>Part 1: Important User Instructions</b> .....	<b>6</b>
<b>1.0 9030 Reader Instructions</b> .....	<b>6</b>
<b>2.0 The 9030 Keypad</b> .....	<b>7</b>
<b>3.0 9030 Series Reader Method of Use</b> .....	<b>7</b>
3.1 How to: Read & Store RFIDs.....	7
3.2 Record RFID Numbers only (no data entry): .....	8
3.3 Quick Data Entry – One only use of Template.....	8
3.4 Data Entry using Templates.....	10
3.5 Data Entry using Function Keys for a pre made Template.....	12
3.6 How to: Upload RFIDs into the Reader.....	13
3.7 How to: Compare RFIDs in the Reader.....	14
3.8 Formatting the File System.....	15
3.7 How to Format your reader.....	15
<b>4.0 ISO 9030 Series Menu Tree</b> .....	<b>16</b>
4.1 Session Menu.....	16
4.2 Read Setup Menu.....	17
4.3 System Setup Menu.....	18
4.4 Reader Information Menu.....	19
4.5 Memory Status Menu .....	19
<b>5.0 Audio and Visual Alerts</b> .....	<b>20</b>
<b>6.0 Menu</b> .....	<b>21</b>
6.1 Sesssion .....	21
6.11 New .....	21
6.12 Send to PC.....	21
6.13 Clear .....	21
6.14 Select.....	21
6.2 Read Setup .....	21
6.21 Load/Save Profile.....	21
6.22 Comparison .....	21
6.23 Alert.....	21
6.24 Storage.....	21
6.25 Send.....	22
6.3 System Setup .....	22
6.31 Communications.....	22
6.32 Display.....	22
6.33 Buzzer.....	23
6.34 Sleep Timer .....	23
6.35 Read Timer .....	23
6.36 Load Defaults .....	23
6.37 Set Date/Time.....	23
6.38 RFM Settings.....	23
6.4 Reader Information.....	24
6.5 Memory Status.....	24
<b>7.0 Battery Charging</b> .....	<b>25</b>
7.1 Battery Messages.....	25
7.2 Battery Charging Requirements .....	25
7.3 Battery Charging Tips .....	25
7.4 Battery Charging Options.....	25
7.5 Alternative Recharging Methods.....	26
<b>8.0 Tuning the Reader</b> .....	<b>26</b>
<b>9.0 The Clock on the 9030 Reader</b> .....	<b>26</b>
<b>10.0 Using BlueTooth (On 9030BT models only)</b> .....	<b>27</b>
10.1 BlueTooth PIN code .....	27
<b>11.0 ISO-9030 Reader Specifications</b> .....	<b>28</b>

<b>12.0</b>	<b>Aleis DataLink Software .....</b>	<b>29</b>
12.1	Aleis DataLink Installation.....	30
12.2	Aleis DataLink Operation .....	30
12.3	Aleis DataLink Menu Screen .....	31
<b>13.0</b>	<b>Aleis Conditions of Sale .....</b>	<b>32</b>

## Regularity Notices and Conformity



### Information to the user (FCC Part 15.105)

This equipment has been tested and found to comply with the limits for a Class B digital device, pursuant to Part 15 of the FCC Rules. These limits are designed to provide reasonable protection against harmful interference in a residential installation. This equipment generates, uses and can radiate radio frequency energy and, if not installed and used in accordance with the instructions, may cause harmful interference to radio communications. However, there is no guarantee that interference will not occur in a particular installation. If this equipment does cause harmful interference to radio or television reception, which can be determined by turning the equipment off and on, the user is encourage to try to correct the interference by one or more of the following measures:

- Reorient or relocate the receiving antenna
- Increase the separation between the equipment and receiver
- Connect the equipment into an outlet on a circuit different from that to which the receiver is connected
- Consult the dealer or an experienced radio/TV technician for help

### Modification warning (FCC Part 15.21)

Warning: Any changes or modifications not expressly approved by Aleis could void the user's authority to operate this equipment.



This Class B digital apparatus complies with Canadian ICES-003.  
Cet appareil numérique de la classe B est conforme à la norme NMB-003 du Canada.



This device has been tested and meets the Electromagnetic Compatibility requirements for EN300 330



This device has been tested and meets the Electromagnetic Compatibility requirements for CISPR 11

### Antenna Warning

This device has been designed to operate with the antennas listed below. The ISO9030 Series Readers are only approved with the antennas below. In accordance with RSS-GEN Issue 2 June 2007 Section 7.1.4 and FCC Part 15.21, antennas not included in this list are strictly prohibited for use with this device.

Aleis Part Number	Antenna Housing Length	Antenna Description
0300(1P)	300mm	200mm Ferrite rod antenna
0500(1P)	500mm	200mm Ferrite rod antenna
1000(1P)	1000mm	200mm Ferrite rod antenna
1500(1P)	1500mm	200mm Ferrite rod antenna
2000(1P)	2000mm	200mm Ferrite rod antenna
2500(1P)	2500mm	200mm Ferrite rod antenna

## Part 1: Important User Instructions

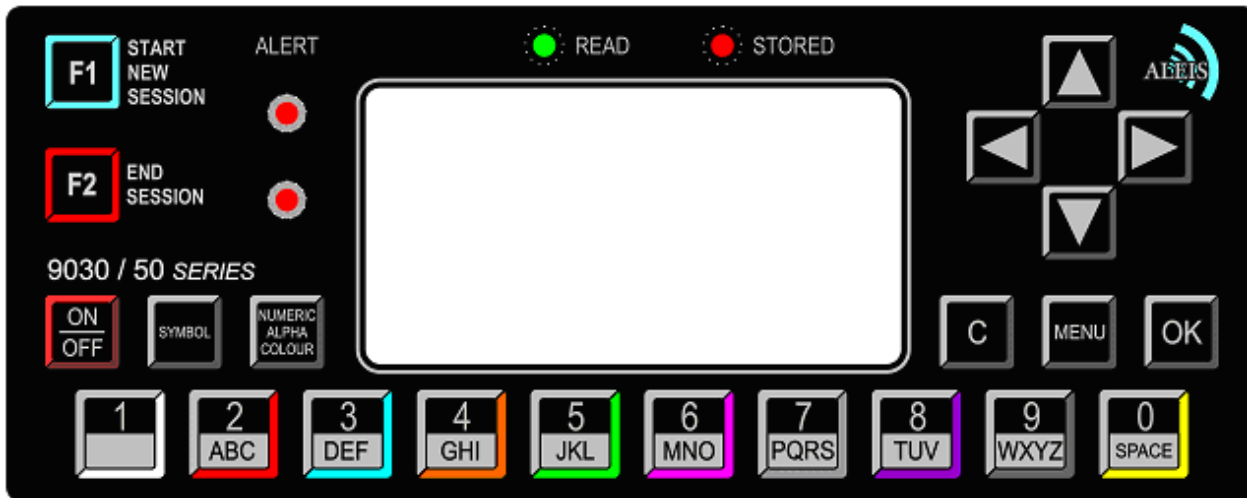
### 1.0 9030 Reader Instructions

**IMPORTANT**  
*Must be read prior to using system*  
**USER INSTRUCTIONS**

The following instructions must be wholly adhered to or permanent damage to the antenna/reader and/or permanent data loss can occur. Non-conformance to the handling and operating instructions will immediately void all warranties for the antenna/reader and software.

1. The clock will lose time if the power is lost. Use DataLink to update your time.
2. Unit is ready to use straight out of the box. No need to change any settings. If settings are changed unit can be reset to factory defaults. (See Menu tree in this manual)
3. **WARNING:** All Aleis Warranties will be immediately voided if this reader is used in any way with HyperTerminal
4. Up to 1,000 sessions, with maximum of 4,000 RFID numbers per session or 100,000 total records. Data must be cleared at 100,000 total records, or 1000 sessions whatever comes first
5. During transportation, readers must be protected from shock in a padded case or box.
6. Aleis suggests a form of transient protection unit be used when used with a power supply to help prevent power surges/spikes.
7. Have only one reading system at a time switched on unless wired sync'ed.
8. Do not high pressure hose or submerge antenna/reader in water.
9. Use only a lightly damp cloth to clean antenna/reader.
10. Do not use chemicals to clean antenna/reader.
11. Do not drop reader boxes as electronics are contained within.
12. All boxes with seals are to be kept sealed.
13. Do not remove any VOID stickers from readers.
14. (For Bluetooth Models) Do not have any large metal objects between reader and Bluetooth as it will affect range and data may not be transferred and may be lost.
15. Aleis Conditions of Sale apply.

## 2.0 The 9030 Keypad



## 3.0 9030 Series Reader Method of Use

### Helpful Hints

- First, it is recommended to go to Menu Setup diagram in User Guide, then go to MENU key on reader, and become familiar with the settings in the reader while looking at the User Guide.
- Pressing C once takes you back to previous step.
- Keep session numbers recorded somewhere so you know which cattle are recorded in individual session numbers.
- Screen will automatically turn off if not used within 30 minutes. (Menu selectable)

### 3.1 How to: Read & Store RFIDs

1. Turn the 9030 Series Reader ON.
2. When Reading Press the button on the wand and wave the wand past the RFID device - ear tag or rumen pellet. When reading rumen pellets, simply wave the wand in a reverse 'L' pattern behind the front leg of the animal, or in front of the brisket.
3. When you have finished reading, you may turn the Reader OFF, and download it later at your PC, or you may start a new session and read another group of animals.

There are four general methods of reading and recording data. Please read each method and follow instructions covering the method you choose with your 9030 series system.

### 3.2 Record RFID Numbers only (no data entry):

#### Start a new session:

1. To start a new session and read another group of animals, press **MENU**.
2. Select **Session** press **OK**.
3. **New** will be highlighted, press **OK**.
4. To read next group of cattle same as last group of cattle, press **down arrow** and select **Blank**.
5. Press **OK**. (Note: A blank data entry box will appear)
6. Press **C** (located to the left of the MENU button) to return to main reading screen.
7. Proceed to read next group of cattle.

### 3.3 Quick Data Entry – One only use of Template.

Use this method when adding data to RFID's and not saving template etc. Example: For recording particular data on a rare occasion.

1. Turn Reader **ON**.
2. Press **MENU**.
3. **Session** will be highlighted, press **OK**.
4. **New** will be highlighted, press **OK**.
5. Press **down arrow** once to highlight the word **Blank**.
6. Press **OK**.
7. A table heading will appear.

Field	Default Data
TAG	
WGT	
P/E	
PAD	

When setting up template there is no need to have a date field as this will record automatically and print with the report. There are **four** data fields available per template.

8. **Field** column allows for three letters/numbers only for each field.  
If recording information for a, tag number, pregnancy result, weight, vaccination, dose rate or paddock. Abbreviate name to three letters only:  
Once name is typed, press **down arrow** and type in name for next field.

Field	Default Data
TAG	
WGT	
P/E	
PAD	

9. Press **right arrow** to move into second column under **Default Data**. Default Data is any data **that will be the same** for every animal read, leave box empty where data is to be changed for each animal. Use **up arrow** and **down arrow** buttons to move in the column. See the example below. Note: Make sure **down arrow** button is pressed after typing is finished in each line – **including the last line**.

Field	Default Data
TAG	
WGT	
P/E	
PAD	<b>River</b>

10. When finished, press **C** (located to left of MENU button) to return to session screen.
11. Read first RFID device, press **OK**.
12. Type in data required – when finished typing first line of data, press **OK** to move to next line to enter next data. **Note:** if data has been entered the same for every animal, it can still be edited if required – on particular line, press **Delete** or backspace arrow and remove what's not required and type data required.
13. Press **OK** on last field, it will automatically return to main reading screen.
14. Quick guide to using **Data Entry Screen** when reading cattle:

Field	Default Data
<b>Tag</b>	Type in Tag Number, press OK.
<b>Vac</b>	5 in 1 - Default Data, press OK.
<b>Dos</b>	Type in Dosage, press OK.
<b>Pad</b>	River - Default Data, press OK.

Press **OK** on last field, it will automatically return to main reading screen to read next RFID.

15. When finished reading and recording data turn Reader **OFF** and download it later at PC, or start a new session and read another group of animals.

#### Start a new session:

16. To start a new session to read another group of animals, press **MENU**.
17. Session will be highlighted, press **OK**.
18. **New** will be highlighted, press **OK**.

Follow same instructions from beginning.

If same fields are required, select **Same Fields** instead of **Blank** (as in step 5)

### 3.4 Data Entry using Templates

- Setup New Template
- Lock Template
- Save Template
- Change Template
- Remove Template

#### Setup New Template

1. Press **MENU**.
2. **Session** is highlighted – press **OK**.
3. Press **down arrow** once to **Data Entry Setup**.
4. Press **OK**.
5. A table heading will appear.

Field	Default Data
-------	--------------

When setting up template there is no need to have a date field as this will record automatically and print with the report. There are five templates available and **four** fields available per template.

6. **Field** column allows for three letters/numbers only for each field. If recording information for a, tag number, pregnancy result, weight, vaccination, dose rate or paddock. Abbreviate name to three letters only: Once name is typed, press **down arrow** and type in name for next field.

Field	Default Data
<b>TAG</b>	
<b>WGT</b>	
<b>P/E</b>	
<b>PAD</b>	

7. Press **right arrow** to move into second column under **Default Data**. Default Data is any data **that will be the same** for every animal read, leave box empty where data is to be changed for each animal. – use **up arrow** and **down arrow** buttons to move in the column. See the example below. Note: Make sure **down arrow** button is pressed after typing is finished in each line – **including the last line**.

Field	Default Data
<b>TAG</b>	
<b>WGT</b>	
<b>P/E</b>	
<b>PAD</b>	<b>River</b>

8. When finished, press **C** (located to the left of **MENU** button) to return to the session screen.

## Lock Template

9. From **Session** press **down arrow** to select **Data Entry Locking**.
10. Press **OK**.
11. By pressing **OK** in any box locks data to prevent it accidentally being changed when typing data into reader. An **X** appears in box when locked.

### Some Examples:

<b>Field</b>	<b>HDR</b>	<b>DEF</b>	<b>DATA</b>
WGT	X		
TAG	X	X	
P/E	X		
PAD	X	X	X

**Field** Names created in **Data Entry Setup**.

**HDR** Locks **HDR** field so it cannot be accidentally changed when entering data. (These should always be locked with an **X**.)

**DEF** If **X** is in box, locks default data created in **Data Entry Setup**. (Default Data is any data **that will be the same** for every animal read.)

**DATA** Locks data field. When **OK** is pressed after reading cattle if this has been locked the data cannot be changed. (This should only be locked with a **X** if default data is to remain the same for each animal.)

12. Once fields and data are locked to your requirements, press **C** button to go back one screen.
13. Template needs to be saved if it is to be used at another time.

## Save Template

14. Press **down arrow** until **Templates** is highlighted.
15. Press **OK**.
16. **Save Template** will be highlighted – press **OK**.
17. Press **OK** on first **Empty** word, or any of the five templates.
18. Type in template name.
19. When finished press **OK**.
20. Message appears **Template Saved**, press **OK**.
21. Press **C** three times to return to main reading screen.
22. Reader is ready to read first group of animals.
23. This process can be carried out well before using the reader.

**Change Template:**

If template is made, and after using it, it needs to be updated or changed, make a new template as per these instructions, make all the changes, go to **Save Template** and highlight template being updated. Press **OK**, and reader will overwrite (replace) it with new updated template.

**Remove Template:**

Instead of highlighting the word 'Empty' when next template is saved, highlight template to be removed and replace it with new template, and press **OK**.

**IMPORTANT:**

The 9030 Series Reader always remembers the last template used, so if **Data Entry Locking** has been enabled on last template used, it will need to be unlocked before creating a new template. To unlock it, go to **Data Entry Locking**, highlight any box with an **X** in it, and press the **OK**.

**3.5 Data Entry using Function Keys for a pre made Template****9030 Series Function Keys**

9030 series Function Keys are designed to make entering data into reader simple and quick. The function of each key is explained to the right of that key, as an example, the F1 key is used to start a new session. These Function Keys are linked directly to created Templates in reader. It is important templates have been set up prior to reading animals and entering data as per this sheet.

1. Turn reader **ON**.
2. Assuming previous session is finished. Press **MENU**.
3. **Session** will be highlighted, press **OK**.
4. Press **down arrow** until **Templates** is highlighted.
5. Press **OK**.
6. Press **down arrow** until **Default Template** is highlighted.
7. Press **OK**.
8. Use arrow keys to highlight (tick) template you want, press **OK**.
9. Press **C** four times to return to main reading screen.
10. Press **F1** to start a new session
11. Press **C**
12. Read first animal
13. Press **OK** if entering data
14. Once all required data has been entered, press **OK** button.

15. When finished reading all animals, press **F2** button to finish reading.
16. Press **F1** to start a new session
17. Press **OK**
18. Read first animal
19. Press **OK** if entering data
20. Once all required data has been entered, press **OK** button.
21. When finished reading all animals, press **F2** button to finish reading and end session.  
(Repeat steps 16 to 21 for each New session required)

### 3.6 How to: Upload RFIDs into the Reader

The feature of uploading RFIDs into the 9030 portable wand is to allow you to find particular RFIDs that you need to identify. For example, if you need to find a particular animal that was treated with a certain medicinal treatment, you can upload the RFID into the reader. When you read the animal with that RFID, the reader will alert you with a long series of beeps so that you will know you have found the animal you were looking for.

To use this feature, there are two steps you will need to perform:

1. Create a file to upload into the reader.
2. Upload the RFIDs into the reader.

#### Before starting you will need:

1. Aleis DataLink installed on your computer.
2. A working COM port – you can check this by turning your 9030 reader on, and then opening Aleis DataLink. Down the bottom right corner of the Aleis DataLink screen, you should see that the software has connected to a particular unit.
3. A list of RFIDs that you want to put into the reader.

#### Step 1: Creating a file to upload into the reader.

Creating the file to upload into the reader is very easy. You can do this in Microsoft Excel or Wordpad or Notepad. All you need to do is have a list of RFIDs with the word TAG as the first entry, ie at the top of the list. It must look like this:

```
TAG
982 000023661452
982 000016654299
982 000027909419
982 000024909416
982 000009161045
982 000024566253
982 000015883922
982 000030781909
```

If you are using Microsoft Excel, then simply put this in Column A, with the word TAG in Row 1.

Once you have done this, you will need to save this as a text file (\*.txt). It is very important that you save this as a text file or the operation will not work. Hint: When you save this, give it a name that is five letters or less.

## Step 2: Upload the files into the reader.

1. Open up Aleis DataLink.
2. Once the software has found the reader, click on the Open button located at the left side of the DataLink screen (there is a big yellow manilla folder on the button).
3. Find the file that you created, and click on the open button.
4. You will see that file name listed in the main screen of Aleis DataLink where the session names and numbers are normally displayed.
5. Click on that file name.
6. Now click on the Upload button located at the left side of the DataLink screen.
7. You will be asked to enter a name. If you want to change the name, go ahead and type in what you would like, then click on the OK button.
8. When it has been successfully uploaded, you will see at the bottom left of the DataLink screen, the words, "Upload Complete".

### 3.7 How to: Compare RFIDs in the Reader

You want to ensure that every time you read an RFID, the reader is checking it against the list of RFIDs you have uploaded into the reader. To make this happen, do the following:

1. Ensure the reader is turned on.
2. Start a new session – as per your requirements . . . so you will be using a template that you are planning to do your work with.
3. Once you have started the new session, and you are in the main reading screen, press the MENU button.
4. Scroll down to **Read Setup** and press the OK button.
5. Scroll down to **Comparison** and press the OK button.
6. Scroll down to  **Session ( )** and press the OK button.
7. Scroll back to the name you saved the uploaded file as and press the OK button.
8. Press the C button (located beside the MENU button).
9. The reader will then reboot – now press the MENU button again.
10. Scroll down to **Read Setup** and press the OK button.
11. Scroll down to **Alert** and press the OK button.
12. Ensure **Condition** is highlighted and press the OK button.
13. Scroll down to  **On Match** and press the OK button – you will see a tick appear in the box.
14. Press the C button (located beside the MENU button).
15. Scroll down to **Action** and press the OK button.
16. Scroll down to  **Msg, LEDs, Buzzer** and press the OK button – you will see a tick appear in the box.
17. Press the C button (located beside the MENU button).
18. Scroll down to **Duration** and press the OK button.
19. Choose the setting you want and press the OK button. 'Until Keypress' means that the reader will continue to beep and flash the LEDs until any key on the reader is pressed.
20. Press the C button (located beside the MENU button) three times – until you see the main reading screen.
21. Turn the reader off and then back on.
22. The reader is now ready to use and will compare the RFIDs you read against the list you uploaded.

\*\*Note: When you upload another new list of RFIDs into the reader, in Step 6 of the above, you will need to tick the box  **Current Session** and then scroll back down and tick the  **Session ( )** again to reactivate the reader to search

### 3.8 Formatting the File System

Formatting of the file system is very important to keep your reader operating at its maximum performance. Once the reader has read and stored a lot of tags eg 40000+ you may notice a slow down in its performance when storing and recalling data. This is similar to your PC when the Hard Drive gets full. When you clear the reader it doesn't actually remove the data so you can retrieve it if you accidentally have cleared the reader. When a "Format file system" is done the data then is lost.

Formatting of the file system should be done every 2-4 months for heavy users or 4-6 months for light users.

Before formatting the file system make sure you have saved any data in the reader. After formatting the data is **NOT** recoverable.

When the reader is formatted your templates will also be cleared so note down the names and the fields in the template so you can set them up again.

### 3.7 How to Format your reader

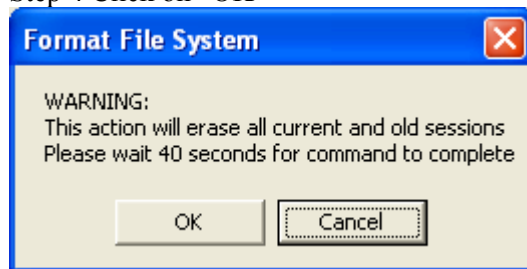
**Note:** Read above "Formatting File System in Reader" first

Step 1 Open DataLink

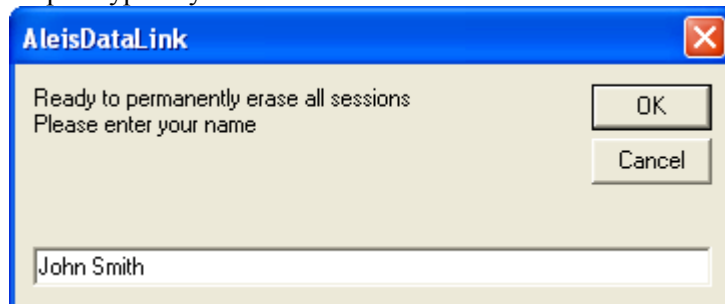
Step 2 Click on "Setup".

Step 3 Click on "Format file system"

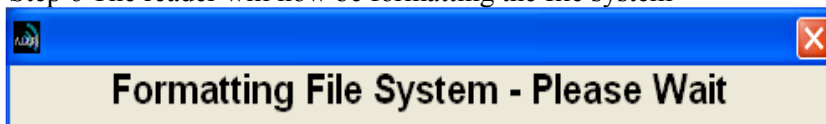
Step 4 Click on "OK"



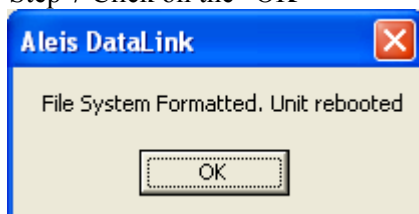
Step 5 Type in your Name and click on "OK"



Step 6 The reader will now be formatting the file system



Step 7 Click on the "OK"



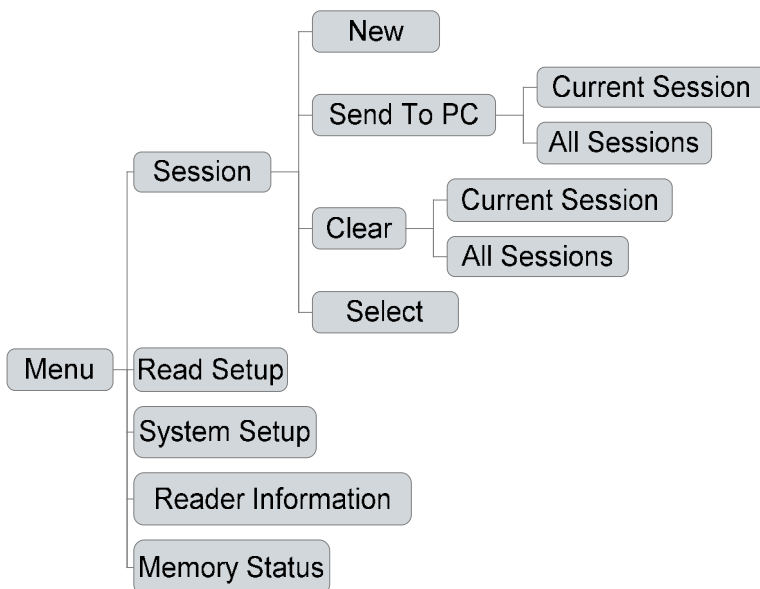
Your reader is now formatted.

## 4.0 ISO 9030 Series Menu Tree

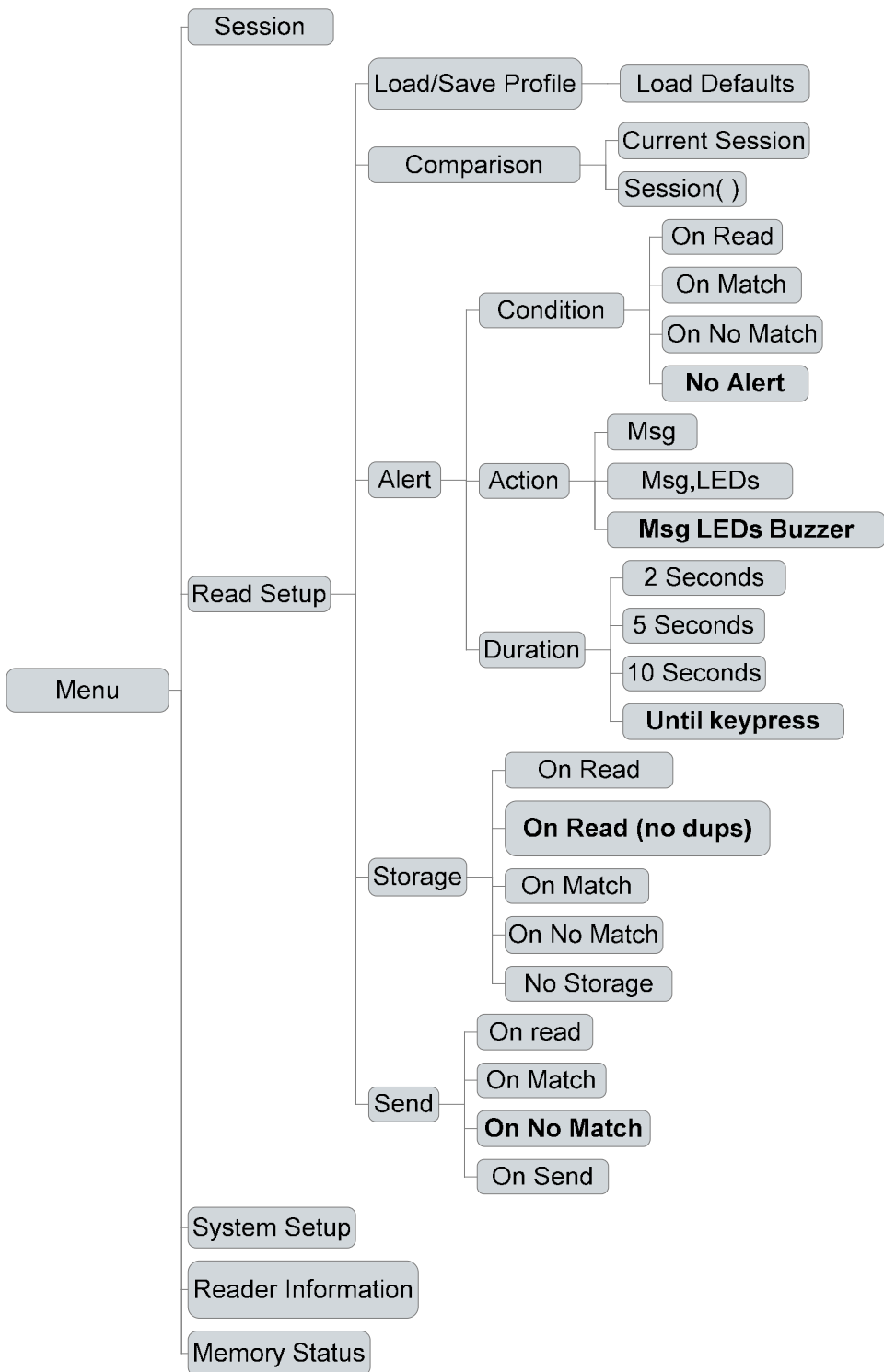
The readers menu has 5 main menu and several sub menu items

1. Session
2. Read Setup
3. System Setup
4. Reader Information
5. Memory Status

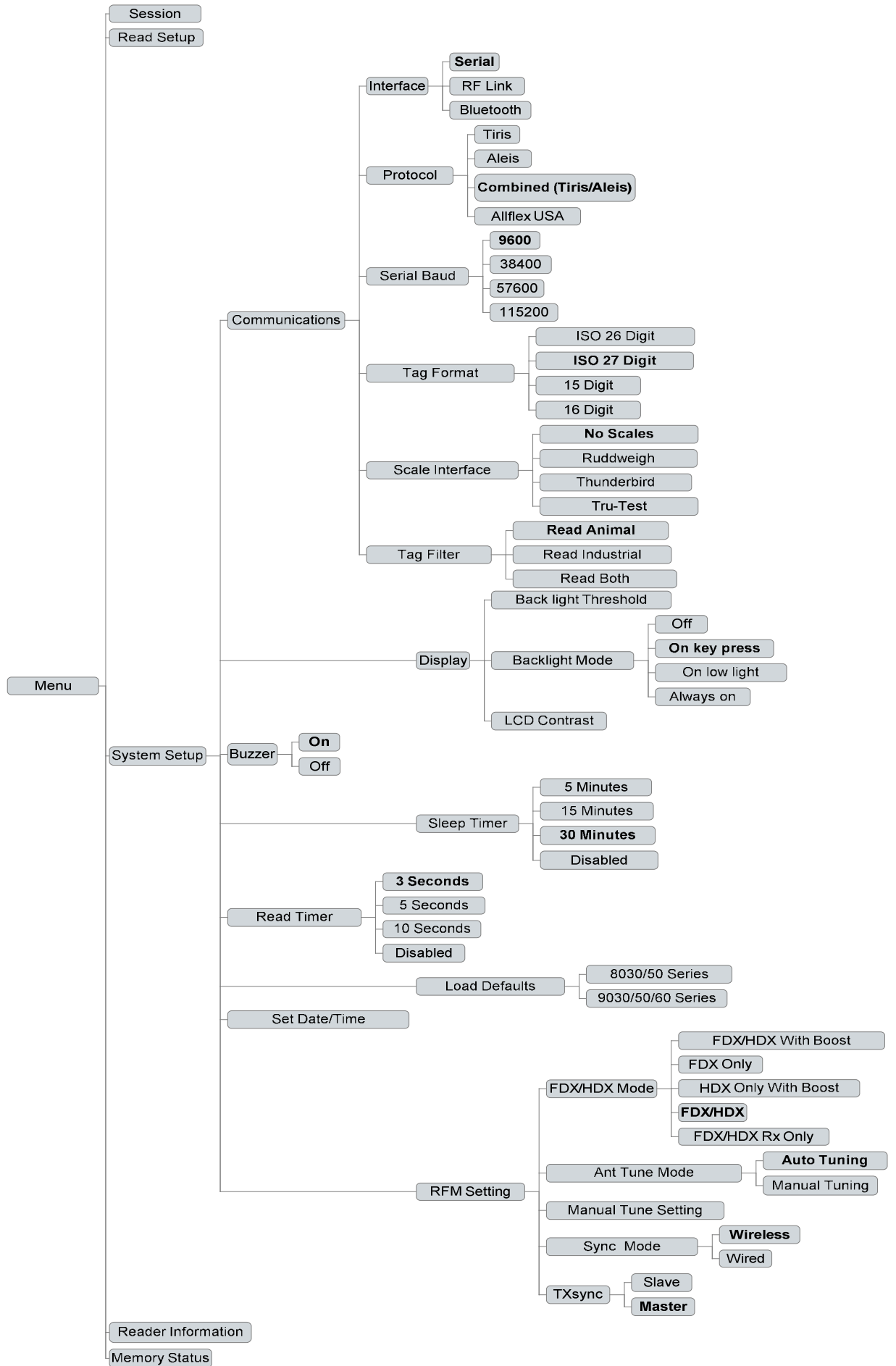
### 4.1 Session Menu



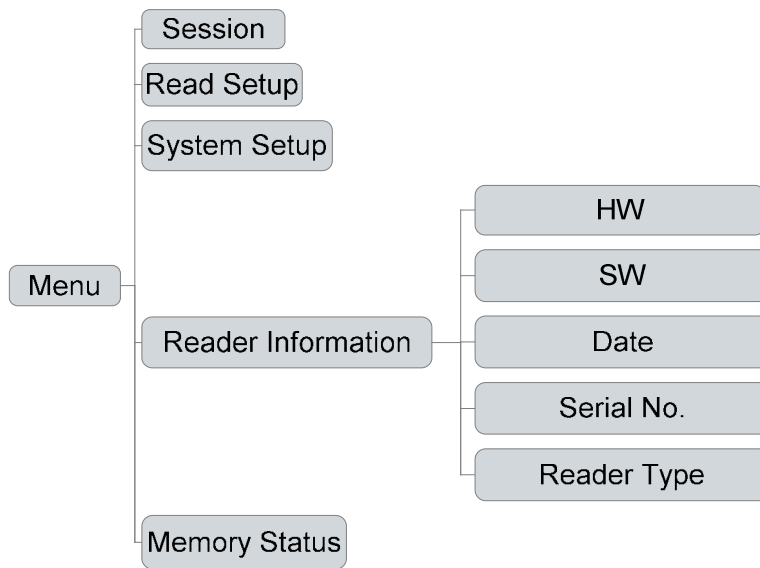
## 4.2 Read Setup Menu



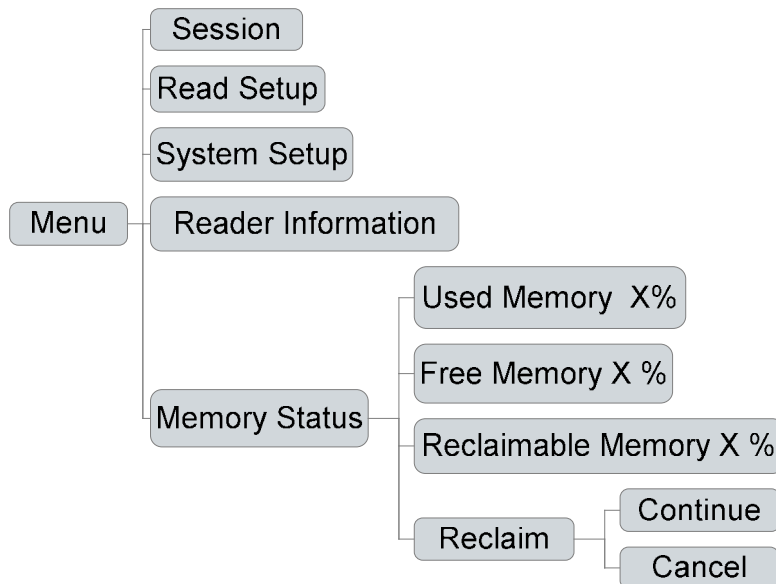
### 4.3 System Setup Menu





#### 4.4 Reader Information Menu



#### 4.5 Memory Status Menu






## 5.0 Audio and Visual Alerts



Features	Buzzer	LCD Display	LED's at Top of LCD	Alert LED's – 2 on the top left side of the screen.
Valid READ	One beep	Current RFID number, eg. 971 00000002861, at top of screen	READ LED blinks once	
Valid READ & ID STORED	Two beeps	Current RFID number, eg. 971 00000002861, at top of screen, and counter at bottom right of screen will increase.	READ and STORED LED's blink once	
No ID Read	One long beep (after read on time out)	NO RFID READ		
No RF Signal being received.	Two very quick beeps (every 30 seconds)	 (Flashing)		
Battery Charge at Low Level	Three very quick beeps (every 60 seconds)			
Battery Charge at Critically Low Level	Constant Beeping	BATTERY LOW		Flashes as unit is about to turn off.

Legend for LCD Visual Displays.

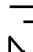

### Battery Level Indicator

-  Fully Charged
-  Half Charged
-  No Charge—unit will turn off

### BlueTooth

- BT (Solid)  Connected
- BT (Flashing)  Not Fitted or BT
- Not ready  (Flashing)

### RF Signal Indicator

-  Connected
-  (Flashing) No Connection

## 6.0 Menu Main Menu (Reader selection choices)

### 6.1 Session

- 6.11 New**  
Starts a New Session
- 6.12 Send to PC**  
Sends the RFIDs in the memory to the PC  
There are two options:
- Current Session
  - All Sessions
- 6.13 Clear**  
Clears the readers memory. There are two options:
- Current Session
  - All Sessions
- 6.14 Select**  
- Selects the session on the reader . Any RFIDs read will be stored in the session selected

### 6.2 Read Setup

- 6.21 Load/Save Profile**  
Load defaults – (Resets Read Setup to factory defaults)
- 6.22 Comparison**  
Compares RFIDs read with
- Current Session
  - Session (Select which session number you want to compare RFID's with)
- 6.23 Alert**  
Alert Options  
The Condition Sets the alert condition when a RFID is read.  
There are 4 Alert Conditions :
- On Read
  - On Match
  - On No Match
  - No alert
- Action  
Sets the Alert Action There are 3 options:
- Msg = Message on screen
  - Msg,LED's = Message & Lights
  - Msg, LED's, Buzzer = Message, Lights & Buzzer
- Duration  
Sets the Alert Duration. There are 4 options
- 2 Seconds
  - 5 Seconds
  - 10 Seconds
  - Until Keypress
- 6.24 Storage**  
Sets the store Condition when a RFID is read There are 5 options
- On Read
  - On Read (No Duplicates)
  - On Match
  - On No-Match
  - No Alert

**6.25 Send**

Sets the Send Condition when a RFID is read. There are 4 options

- On Read
- On Match
- On No-Match
- No Send

**6.3 System Setup****6.31 Communications****Interface**

Sets the interface the RFID is send out when a tag is read

- Serial
- RF Modem
- Bluetooth

**Protocol**

Sets the protocol string when a RFID is read or when communicating with the reader

- Tiris
- Aleis
- Combined (Tiris/Aleis)
- Allflex USA

**Serial**

Sets the Baud Rate for the serial output only

- 9600
- 38400
- 57600
- 115200

**Tag Format**

Set the lentgh of the RFID string

- ISO 26 Digit
- ISO 27 Digit
- 15 Digit
- 16 Digit

**Scale Interface**

Sets scale type, overrides Tag Output Format, Serial Baud Rate, and Download Format to suit the scale's requirements.

- No Scales
- Ruddweigh
- Thunderbird
- Tru-Test

**6.32 Display****Backlight Threshold**

(Select required lighting Eg 1 = always bright. 16 = will come on when very dark. Subject to Backlight Mode selection below)

**Backlight Mode**

Sets the condition when the Backlight comes on.

- Off
- On key-press
- On low-light
- Always On

**LCD Contrast**

(Select required contrast Eg 90 = light contrast. 120= very dark. Subject to viewing angle)

**6.33 Buzzer**

Turns the Buzzer On/Off

- Off
- On

**6.34 Sleep Timer**

Sets the Sleep Timer. The unit will turn off to save battery power if it is not used in the selected time

- 5 Minutes
- 15 Minutes
- 30 Minutes
- Disabled

**6.35 Read Timer**

Sets the read timer for handheld mode

- 3 Seconds
- 5 Seconds
- 10 Seconds
- Continuous

**6.36 Load Defaults**

Loads the defaults back to factory settings

- 9030/50 Series
- 9030/50/60 Series

**6.37 Set Date/Time**

-Sets Date and Time

**6.38 RFM Settings**

FDX/HDX Mode

Sets the readers FDX/HDX mode

- FDX/HDX With Boost
- FDX Only
- HDX Only With Boost
- FDX/HDX
- FDX/HDX Rx Only

Ant Tune Mode

Selects Auto or manual antenna tuning.

- Auto Tuning
- Manual Tuning

Manual Tune Settings

When Manual tune is selected above you can change the tuning value to suit the read requirement, either for a maximum voltage (maximum range) or detune for a smaller read distance.

Sync Mode

Sets read cycle synchronization mode. Wired requires the TXS (orange) signal wires to be connected to the unit if TX sync is a slave.

- Wireless
- Wired

**TxSync**

Sets TX sync mode to master or slave unit (only applicable to Wired Sync Mode).

- Slave
- Master

**6.4 Reader Information**

(This is for technical assistance only & product identification)

**Reader Info**

**Hardware:** (Hardware Version)  
**Software:** (Software Version)  
**Date:** (Software Date)  
**Serial No:** (Reader Serial Number)  
**Reader Type:** (Aleis Reader Model)

**6.5 Memory Status**

<b>Used Memory X%</b>	Percentage of Used Memory
<b>Free Memory X%</b>	Percentage of Free Memory
<b>Reclaimable Memory X%</b>	Percentage of Recoverable Cleared Memory (old Sessions)

## 7.0 Battery Charging

Charge for 24 hours for 1<sup>st</sup> initial charge.

Aleis suggests a form of transient protection unit be used while charging the reader to help prevent power surges/spikes.

The batteries in the unit can be charged by using the 6-pin connector on the side of the unit. When the battery charger is plugged in, it will automatically turn the reader ON. This is completely normal – you do not need to turn the unit OFF.

Once the unit has been on charge overnight the unit will display one of these messages.

- Battery Charged (dv)
- Battery Charged (to)
- Battery Charged (t)

### 7.1 Battery Messages

Battery Charged (dv) -Battery charged at normal conditions

Battery Charged (to) -Battery charged and timed out at 8 hours.

Battery Charged (t) - Battery charged and tripped out on high temperature.

Thermistor Error -Unit has reported a battery error and will not charge. Contact supplier for further help.

Battery Too Hot -Battery Temperature over 55oC. Will not start charging until battery temperature falls to 40oC.

Message will appear and stay on top of screen until cleared or unit is turned off

### 7.2 Battery Charging Requirements

- Charge unit using supplied charger only.
- Do not use Reader while it is being charged.
- Ensure when fitting charger connector that the male and female groove are aligned and pushed in correctly.
- Must charge reader prior to storage and every 10-12 weeks to maintain clock time.

### 7.3 Battery Charging Tips

- To ensure that the battery receives a full charge, charge the unit overnight (8hrs).
- To verify that the unit is charging, the battery icon will simulate being filled up, i.e. the icon will turn black.
- The battery does not have to be flat to be charged. It is recommended that after each use, the unit is charged.

### 7.4 Battery Charging Options

An optional Car Cigarette Lighter Battery Charger is available.

## 7.5 Alternative Recharging Methods

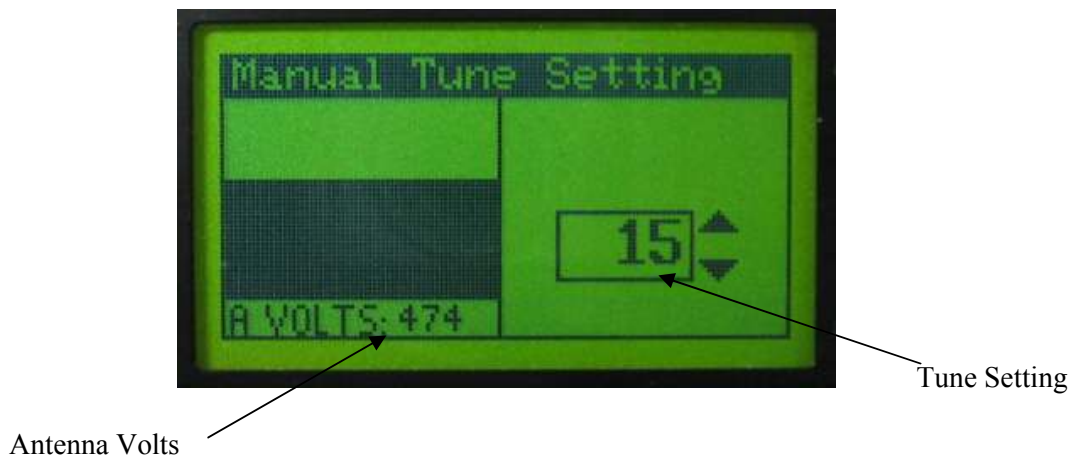
Contact Aleis for alternative methods of charging.

## 8.0 Tuning the Reader

The reader is set to Auto tune from the factory. In most situations this will be the normal setting. When the unit is powered up it automatically tunes the antenna for best performance. Some installations may require the antenna de-tuned or fixed at a tuning point because of moving metallic components which may try and retune differently at every power up or for a reduced read range.

To tune manually you must first go into the Menu via System Setup/RFM Setting/Ant Tune Mode. Select Manual Tune Setting. Then go back one menu to Manual Tune Setting.

On the right hand side of the screen is the current tune setting which it last tuned to on an Auto tune. By pressing the up and down arrows you will adjust the tune setting from 0 to 31. On the left hand side of the screen you will see the Antenna voltage change when you step through the settings. You will be either tuning for a maximum voltage or lower voltage for a lower read range depending on the read distance required.



## 9.0 The Clock on the 9030 Reader

The clock on the 9030 Reader is what will put the date and time stamp on each RFID that is read by the reader. To reset or change the date and time on the clock, simply plug the 9030 Reader into your computer, turn the reader on, and then open Aleis DataLink. (This is the default setting in DataLink Setup). After 30 seconds, the reader will automatically be updated with the date and time that is on your computer. **Please ensure the date and time on your computer is correct.** This feature can be disabled in the DataLink setup menu by unticking the box. You can also change the clock in the Menu through System Setup.

**NOTE:** The clock will lose time if the battery is run or left flat.

## 10.0 Using BlueTooth (On 9030BT models only)

The BlueTooth is turned on via the menu.

Eg. Menu/System Setup/Communications/Interface/Bluetooth

The BT symbol will appear solid if a Bluetooth is fitted. If it flashes a Bluetooth is not fitted.

Notes:

1. The BlueTooth Feature is only available if you have a 9030BT model. If you don't your unit can be upgraded for this feature. Contact the supplier for further information and costing.
2. BlueTooth is a way you can communicate to a PC, PDA or other device without using the serial cable, referred to as a Wireless connection.
3. The PC or device that 9030BT is going to communicate to must have BlueTooth fitted. The PC or device sets up the link between the two units.

### 10.1 BlueTooth PIN code

The Pin Code or access code as it is sometimes referred to is the 4 digit serial number on the side of the 9030BT.

If the sticker is missing, when you discover the 9030BT on the PC or device, the 4 digit number which comes up in the name of the 9030BT discovered, is the pin number.

Refer to your PC or other devices manual to see how to discover and connect to a BlueTooth device

## 11.0 ISO-9030 Reader Specifications

<b>General</b>	
Frequency:	134.2Khz
RFID Compatibility:	ISO 11784 & 11785 HDX and FDX-B
User Interface:	RS-232 Serial Port/Bluetooth Option.
RS-232 Port:	9600bps, 8 Data Bits, No Parity, 1 Stop Bit.
RFID Code output:	Decimal or Hex
Antenna Tuning:	Auto or Manual (Default Auto)
Memory:	Min 40,000 and up to 100,000 Records in Non-Volatile RAM
User Options:	EEPROM control via RS-232 Serial
Battery Power:	9.6 Volt DC NiMH
Agency Certifications:	USA - FCC Part 15.101, 15.209 Class B, Canadian - RSS-210, RSS-Gen, ICES-003 Europe – EN300-330, EN301-489, EN55011, EN55024 AS/NZS - CISPR 11

<b>Physical</b>	
Dimensions:	865mm with standard 500mm wand
Weight:	1.8Kgs
Material:	Antenna- Fiberglass, Box- Polycarbonate
Operating Temperature:	-20c to +60c
Storage Temperature:	-40c to +85c
Humidity:	0 to 100%
Hermeticity:	IP67

<b>Performance</b>	
HDX:	>500mm using Allflex HDX/HP tag in best orientation.
FDX:	>400mm using Allflex FDX-B/HP tag in best orientation.
Read Rate:	Wireless Sync mode 9 times/second.
Read Error Rate:	less than 1 in 1 million.
Radiated Field Strength:	96.8 dBuV/m at 10 meters

# Aleis DataLink Software

## 12.0 Aleis DataLink Software

### **IMPORTANT**

*Must be read prior to using software*

This software has been purposefully designed to download the RFID's and/or respective data relating to those RFID's from the Aleis 7000 8030/50 and 9030/50/60 Series Readers. Aleis accepts no responsibility for any form of improper use, negligent or otherwise, resulting in the loss of RFID's with the use of this software. All practical assistance will be given in the operation and understanding of this software, and this can be obtained by contacting Aleis or an Aleis distributor. Copying of this software is strictly prohibited.

1. This software is designed for Aleis 7000 8030/50 and 9030/50/60 Series Readers ONLY.
2. Aleis Reader must be plugged into computer this software is installed on.
3. Aleis Reader must be turned ON before opening Aleis DataLink.
4. Aleis DataLink PC Requirements:

#### **Operating Systems**

- Windows ME
- Windows NT 4.0
- Windows 2000
- Windows XP
- Vista
- Window 7

#### **Minimum Hardware**

- Pentium 233 MHz (*Recommended: Pentium 500MHz or greater*)
- 64 MB RAM (*Recommended: 128 MB RAM or greater*)
- 20 MB hard drive space

This software package serves as an easy download program which automatically downloads the reader's session list. Once the reader is downloaded, you can then save particular downloaded sessions or all downloaded sessions on your computer. You can then open these saved files in Excel or your desired program. The program also allows you to transfer animals on the NLIS database.

Special features include:

- Auto-detects what com-port reader is plugged into.
- Quick and easy animal transfers to the NLIS database for Producers and 3<sup>rd</sup> party users.
- Downloading all animal data from reader to excel.
- Loading tag file buckets from database to the reader.
- Updating readers software.
- Updates clock on reader to time displayed on computer. (For models that have clocks.)

## 12.1 Aleis DataLink Installation

To install DataLink:

1. Place the DataLink CD into the CD drive; the program will automatically begin installation.  
If not Go to My Computer Double click on the CD Rom Drive Browse the CD and Double click on the icon called DataLink
2. Follow the installation prompts, and click on Finish when installation is complete.

## 12.2 Aleis DataLink Operation

Operating Aleis DataLink:

**IMPORTANT:** The Aleis Reader *must be plugged securely into your computer and turned on* before opening Aleis DataLink.

### 1.0 Plugging the Aleis Reader into your computer.

Plug the 9 pin female serial connector into the 9 Pin male serial connection at the back of your computer or laptop. Some laptops do not have a serial connection, and so a Serial to USB adaptor can be used. Should such an adaptor be used, Aleis DataLink works just as effectively provided you have installed the drivers for the adaptor correctly.

### 2.0 Opening Aleis DataLink.

1. Turn Aleis Reader on
2. Double click on the Aleis DataLink icon located on your desktop.
3. This will open up the software for operation. As soon as the program is opened, it will automatically download the reader for you.

## 12.3 Aleis DataLink Menu Screen

Full Index for Help in software (F1)

### Brief overview of Aleis DataLink Menu Screen



**Show Session-** Displays lists of sessions when you select old or current

**Current -**Displays current session

**Old-** Displays sessions previously cleared from reader

**Re-downloads** session out of reader

**Open:** Opens sessions previously saved on computer

**Save As:** Saves sessions to file of choice on computer

**Clears all Sessions** from reader

**Clears selected session** from reader

**Uploads selected session** to reader

**Setup 1:** Update reader software, **2:** Format file systems, **3:** Advanced features

**Remote Connect** only used in multiple reader situations

**Gives the ability to enter RFID number or NLIS number manually** in the event of tag failure.

**Prints selected information**

**Exports session to Excel**

**Exits DataLink**

### 13.0 Aleis Conditions of Sale

1. In these conditions:
  - (1) 'Vendor' means Aleis Pty Ltd ACN 130 754 826 of the Cnr Old Rosevale & Jandowae/Kingaroy Rds, Jandowae, Queensland, 4410 which is the seller of the goods
  - (2) 'Factory' means the Vendor's principal place of business at the Cnr Old Rosevale & Jandowae /Kingaroy Rds, Jandowae, Queensland 4410.
  - (3) 'Purchaser' means the customer(s) described overleaf which is the purchaser of the goods.
  - (4) 'Goods' means the products and, if any, services specified overleaf
  - (5) Nothing in these conditions shall be read or applied so as to exclude, restrict or modify or have the effect of excluding, restricting or modifying any condition, warranty, guarantee, right or remedy implied by law (including the Trade Practices Act 1974) and which by law cannot be excluded, restricted or modified.
  - (6) Words denoting the singular number only include the plural number and vice versa; where reference to any gender includes every other gender and words denoting individuals include corporations
2. These conditions (which shall only be waived in writing signed by the vendor) shall prevail over all conditions of the purchaser's order to the extent of any inconsistency.
3. The goods and all other products sold by vendor are sold on these terms and conditions.
4. Unless previously withdrawn, vendor's quotation is open for acceptance within the period stated therein or, when no period is so stated, within thirty (30) days only after its date. The vendor reserves the right to refuse any order based on this quotation within 7 days after the receipt of the order.
5. The cost of any special packing and packing materials used in relation to the goods shall be at the purchaser's expense notwithstanding that such cost may have been omitted from any quotation.
6. The purchaser waives any claim for shortage or discrepancy of any goods delivered if a claim in respect thereof has not been lodged with vendor within seven (7) days from the date of receipt of goods by the purchaser.
7. All specifications, drawings, and particulars of weights and dimensions submitted by vendor are approximate only and any deviation shall not be taken to vitiate any contract with vendor or form grounds for any claim against vendor. The descriptions, illustrations and performances contained in catalogues, price lists and other advertising matter do not form part of the contract of sale of the goods. Where specifications, drawings or other particulars are supplied by purchaser, vendor's price is made on estimates of quantities required. Should there be any adjustments in quantities above or below the quantities estimated by vendor and set out in a quotation, then any such increase or decrease shall be adjusted on a unit rate basis according to unit prices set out herein.
- 8.1 Any performance figures given by vendor are estimates only. Vendor shall be under no liability for damages for failure to attain such figures unless specifically guaranteed in writing and any such written guarantee shall be subject to the recognised tolerances applicable to such figures.
- 8.2 The Purchaser acknowledges that frequency from other products, for example computer equipment, videos, loud speakers and other metal products may affect the goods' performance. The Vendor gives no warranty that in the event of any frequency disruption the goods will remain fit for the purpose intended. The Vendor will not be liable for any claims made as a result of other equipment or other things interfering with the performance of the goods whether on account of frequency disruption or otherwise.
9. Delivery dates mentioned are an estimate only and vendor shall not be liable for late delivery or non-delivery and under no circumstances shall the vendor be liable for any loss, damage or delay occasioned to the purchaser arising from late or non-delivery or late installation of the goods.
10.
  - (1) Unless specifically agreed otherwise in writing, delivery shall be ex-factory. The Purchaser must make its own arrangements for the transport of the goods from the factory and any assistance that the Vendor gives in transporting the goods shall not effect the rights of the Vendor under this Clause. Vendor is not responsible for any loss or damage to goods in transit.
  - (2) Risk in the goods shall pass to the Purchaser upon dispatch of goods from Factory.
11.
  - (1) Vendor's liability for goods manufactured by it is limited to making good any defects by repairing the same or at vendor's option by replacement, within a period not exceeding twelve calendar months after the goods have been dispatched (or installed by Aleis) provided that:
    - (a) defects have arisen solely from faulty materials or workmanship;
    - (b) the goods have not received maltreatment, inattention or interference;
    - (c) accessories of any kind used by the purchaser are manufactured by or approved by vendor;
    - (d) the seals of any kind on the goods remain unbroken; and
    - (e) the defective parts are promptly returned free of cost to vendor.
    - (f) all freight is paid by the purchaser.
  - (2) If goods are not manufactured by vendor the guarantee of the manufacturer thereof shall be accepted by the purchaser and is the only guarantee given to purchaser in respect of the goods.

- (3) Vendor shall not be liable for and purchaser releases vendor from any claims in respect of faulty or defective design of any goods supplied unless such design has been wholly prepared by vendor and the responsibility for any claim has been specifically accepted by vendor in writing and in any event vendor's liability hereunder shall be strictly limited to the replacement of defective parts in accordance with para 11(1) of these conditions.
- (4) Except as provided herein, all express and implied warranties, guarantees and conditions under statute or general law as to merchantability, description, quality, suitability or fitness of the goods for any purpose or as to design, assembly, installation, materials or workmanship or otherwise are hereby expressly excluded and vendor shall not be liable for physical or financial injury, loss or damage or for consequential loss or damage of any kind arising out of the supply, layout, assembly, installation or operation of the goods or arising out of vendor's negligence or in any way whatsoever.
12. Vendor's liability for a breach of a condition or warranty implied by Div 2 of Pt V of the Trade Practices Act 1974 (other than s 69) is hereby limited to:
- (1) in the case of goods, any one or more of the following:
- (a) the replacement of the goods or the supply of equivalent goods;
- (b) the repair of the goods;
- (c) the payment of the cost of replacing the goods or of acquiring equivalent goods;
- (d) the payment of the cost of having the goods repaired; or
- (2) in the case of services:
- (a) the supplying of the services again; or
- (b) the payment of the cost of having the services supplied again.
13. Vendor's liability under s 74H of the Trade Practices Act 1975 is expressly limited to a liability to pay to the purchaser an amount equal to:
- (1) the cost of replacing the goods;
- (2) the cost of obtaining equivalent goods; or
- (3) the cost of having the goods repaired, whichever is the lowest amount.
14. Unless otherwise stated all prices quoted by vendor are net, exclusive of tax. Prices quoted are those ruling at the date of issue of quotation and are based on rates of freight, insurance, customs duties, exchange, shipping expenses, sorting and stacking charges, cartage, rate of weighs, cost of materials and other charges affecting the cost of production ruling on the date the quotation is made and any alterations thereto either before acceptance of or during the currency of the contract shall be to the purchaser's account.
15. The purchase price in relation to goods shall be payable and payment or balance thereof shall be made immediately at time of order, or otherwise as agreed in writing.
16. Vendor reserves the following rights in relation to the goods until all accounts owed by the purchaser to vendor are fully paid:
- (1) legal ownership of the goods;
- (2) to enter the purchaser's premises (or the premises of any associated company or agent where the goods are located) without liability for trespass or any resulting damage and retake possession of the goods; and
- (3) to keep or resell any goods repossessed pursuant to (2) above;
- If the goods are resold, or products manufactured using the goods are sold, by the purchaser, the purchaser shall hold such part of the proceeds of any such sale as represents the invoice price of the goods sold or used in the manufacture of the goods sold in a separate identifiable account as the beneficial property of vendor and shall pay such amount to vendor upon request. Notwithstanding the provisions above vendor shall be entitled to maintain an action against the purchaser for the purchase price and the risk of the goods shall pass to the purchaser upon delivery.
17. Any property of the purchaser under vendor's custody or control shall be entirely at the purchaser's risk as regards loss or damage caused to the property or by it.
18. Vendor reserves the right to make a reasonable charge for storage if the purchaser does not take delivery of goods within fourteen days of notification that the goods are ready for collection.
19. Vendor shall not be under any obligation to accept goods returned by the purchaser and will do so only on terms to be agreed in writing in each individual case.
20. All goods to be supplied by vendor shall be as described on the quotation overleaf and the description on such order modified as so agreed shall prevail over all other descriptions including any purchaser's specification or inquiry.
21. No order may be cancelled except with consent in writing and on terms which will indemnify vendors against all losses.
22. The contract for sale of the goods is made in the state of Queensland and the parties agree to submit all disputes arising between them to the courts of such state at any court competent to hear appeals therefrom.
23. The Purchaser shall pay all and any import duties, levies or imports and/or any sales, use, excise, gross receipts, value added, goods and services tax, property or other taxes or duties of any kind whatsoever assessed upon or relating in any way to the goods ordered by the Purchaser irrespective of the person, nation, state or authority requiring payment thereof.

24. If the Vendor has not paid for any goods on the due date specified in this Agreement, without prejudice to any other right or remedy, all outstanding money shall bear interest on daily balances until paid at the rate of 1.5% per month and such money together with all interest shall be recoverable forthwith from the Purchaser.

The Purchaser charges as a fixed charge with the payment of all monies now or in the future becoming owing hereunder all his property both real and personal (other than property referred to in *Section 262 (i) of the Corporations Law*) and as a separate charge charges all his other property with the payment of all monies now or in the future becoming owing hereunder, provided that this second charge will be a floating charge in respect of the Purchaser's current assets but otherwise will be a fixed charge. The Purchaser irrevocably makes, nominates, constitutes and appoints, and in the place and stead of the Purchaser puts and deposes the Vendor and (if the Vendor is a corporation) the directors, general manager and secretary for the time being of the Vendor jointly and each of them severally to be the Attorney or Attorneys of Purchaser at any time after default as aforesaid has been made (sufficient proof of which will be the Statutory Declaration of the Attorney or Attorneys or either or any of them) to do all such things as may be required to consent to any Caveat or other like instrument under the Real Property Legislation of any other jurisdiction in the form prepared by the Vendor's Solicitor over any or all of the Purchaser's property and to execute a mortgage and/or charge or other like instrument under the Real Property Legislation of any other jurisdiction in such form and containing such terms and conditions as the Vendor may require over any or all of the Purchaser's property and from time to time to appoint a substitute or substitutes and such appointment or appointments at pleasure to revoke and another or other substitute or substitutes to appoint and generally to do, execute and perform any act, deed, matter or thing for that purpose as fully and effectually as the Purchaser could do and the Purchaser agrees to ratify and confirm all and whatever the said Attorney or Attorneys or any substitute or substitutes lawfully do or cause to be done for that purpose.

The End Ver10/05/01